

# I WAS ONLY 19

(A walk in the light green)

RED GUM

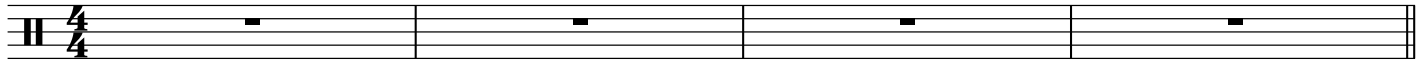
Tempo: 88 bpm

Light folk / rock feel

Semi quaver fills have a slight swing feel.

Hi Hats have a gentle off beat accent at times.

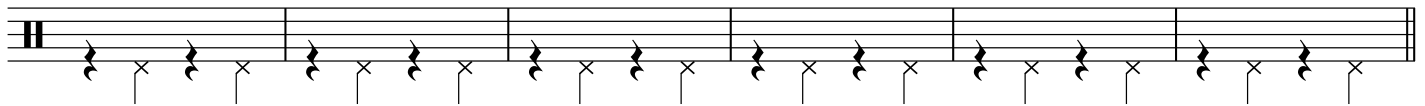
## Acoustic Guitar Intro



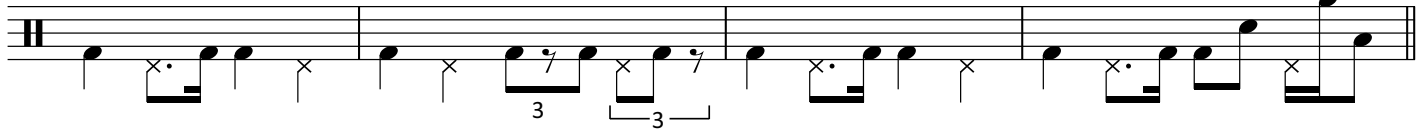
## Verse 1



14



20



(Hi hats)

## Verse 2



28



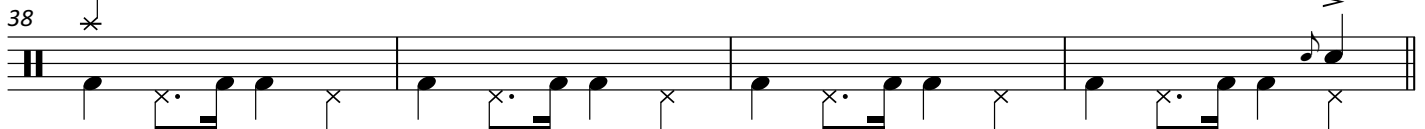
32



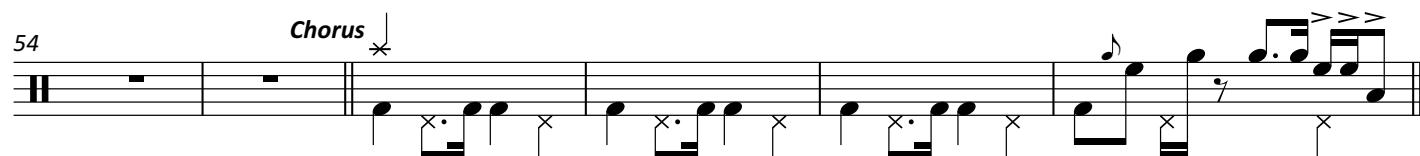
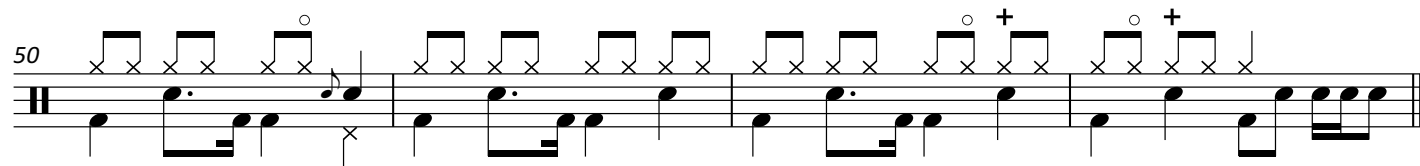
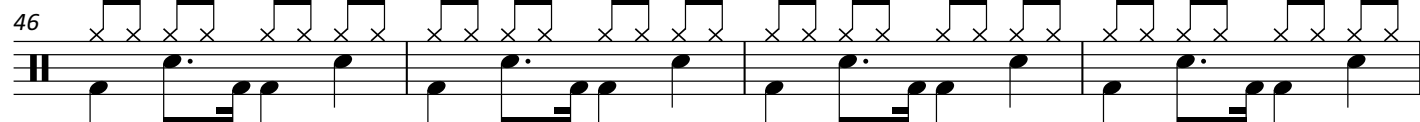
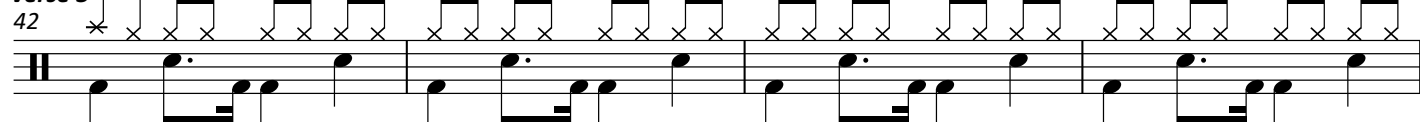
36



## Chorus



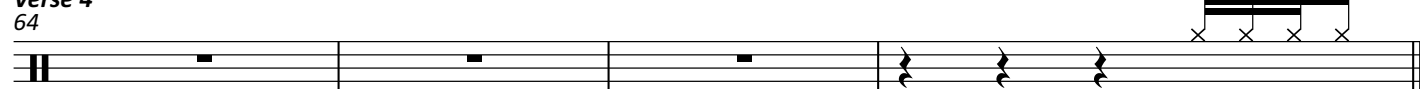
## Verse 3



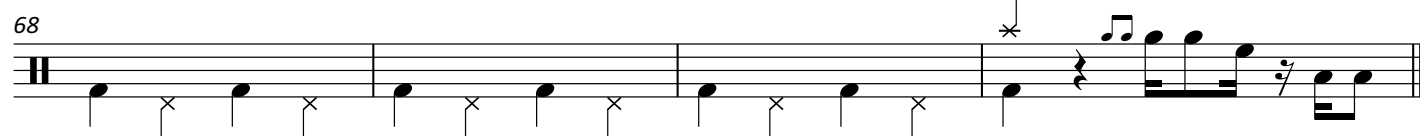
(Ride cym)



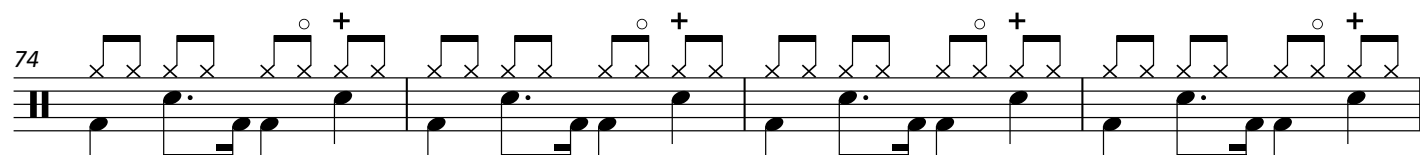
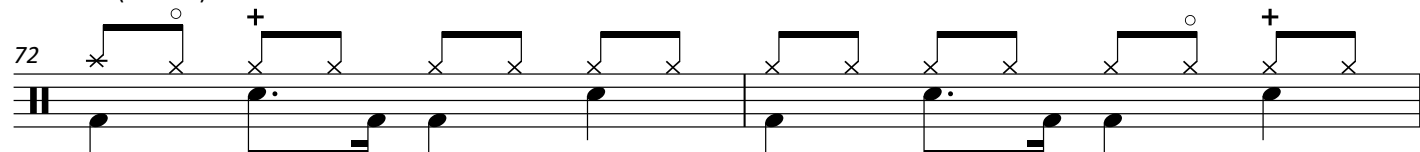
## Verse 4



(Ride cym)



(Hi hats)



***Chorus***

78

**Chorus**  
78

The musical notation for the chorus of 'The Rose Tree' is written on a single staff. It begins with a treble clef and a key signature of one sharp (F#). The melody starts on a whole note G4, followed by a quarter rest. The next measure contains a quarter note A4, a quarter note B4, and a quarter note C5. The following measure contains a quarter note D5, a quarter note E5, and a quarter note F#5. The melody then descends: a quarter note E5, a quarter note D5, and a quarter note C5. The next measure contains a quarter note B4, a quarter note A4, and a quarter note G4. The melody then ascends: a quarter note A4, a quarter note B4, and a quarter note C5. The final measure contains a quarter note D5, a quarter note E5, and a quarter note F#5. The notation includes various musical symbols such as clefs, key signatures, and note values.

82

82

**Chorus**

87

**Chorus**  
87

The musical score for the Chorus section, measures 87-90, is written on a single staff. Measure 87 begins with a treble clef and a key signature of one sharp (F#). The first measure contains a half note G4, a quarter note A4, and a quarter note B4. The second measure contains a half note C5, a quarter note D5, and a quarter note E5. The third measure contains a half note F#5, a quarter note G5, and a quarter note A5. The fourth measure contains a half note B5, a quarter note C6, and a quarter note D6. The fifth measure contains a half note E6, a quarter note F#6, and a quarter note G6. The sixth measure contains a half note A6, a quarter note B6, and a quarter note C7. The seventh measure contains a half note D7, a quarter note E7, and a quarter note F#7. The eighth measure contains a half note G7, a quarter note A7, and a quarter note B7. The ninth measure contains a half note C8, a quarter note D8, and a quarter note E8. The tenth measure contains a half note F#8, a quarter note G8, and a quarter note A8. The eleventh measure contains a half note B8, a quarter note C9, and a quarter note D9. The twelfth measure contains a half note E9, a quarter note F#9, and a quarter note G9. The thirteenth measure contains a half note A9, a quarter note B9, and a quarter note C10. The fourteenth measure contains a half note D10, a quarter note E10, and a quarter note F#10. The fifteenth measure contains a half note G10, a quarter note A10, and a quarter note B10. The sixteenth measure contains a half note C11, a quarter note D11, and a quarter note E11. The seventeenth measure contains a half note F#11, a quarter note G11, and a quarter note A11. The eighteenth measure contains a half note B11, a quarter note C12, and a quarter note D12. The nineteenth measure contains a half note E12, a quarter note F#12, and a quarter note G12. The twentieth measure contains a half note A12, a quarter note B12, and a quarter note C13. The twenty-first measure contains a half note D13, a quarter note E13, and a quarter note F#13. The twenty-second measure contains a half note G13, a quarter note A13, and a quarter note B13. The twenty-third measure contains a half note C14, a quarter note D14, and a quarter note E14. The twenty-fourth measure contains a half note F#14, a quarter note G14, and a quarter note A14. The twenty-fifth measure contains a half note B14, a quarter note C15, and a quarter note D15. The twenty-sixth measure contains a half note E15, a quarter note F#15, and a quarter note G15. The twenty-seventh measure contains a half note A15, a quarter note B15, and a quarter note C16. The twenty-eighth measure contains a half note D16, a quarter note E16, and a quarter note F#16. The twenty-ninth measure contains a half note G16, a quarter note A16, and a quarter note B16. The thirtieth measure contains a half note C17, a quarter note D17, and a quarter note E17. The thirty-first measure contains a half note F#17, a quarter note G17, and a quarter note A17. The thirty-second measure contains a half note B17, a quarter note C18, and a quarter note D18. The thirty-third measure contains a half note E18, a quarter note F#18, and a quarter note G18. The thirty-fourth measure contains a half note A18, a quarter note B18, and a quarter note C19. The thirty-fifth measure contains a half note D19, a quarter note E19, and a quarter note F#19. The thirty-sixth measure contains a half note G19, a quarter note A19, and a quarter note B19. The thirty-seventh measure contains a half note C20, a quarter note D20, and a quarter note E20. The thirty-eighth measure contains a half note F#20, a quarter note G20, and a quarter note A20. The thirty-ninth measure contains a half note B20, a quarter note C21, and a quarter note D21. The fortieth measure contains a half note E21, a quarter note F#21, and a quarter note G21. The forty-first measure contains a half note A21, a quarter note B21, and a quarter note C22. The forty-second measure contains a half note D22, a quarter note E22, and a quarter note F#22. The forty-third measure contains a half note G22, a quarter note A22, and a quarter note B22. The forty-fourth measure contains a half note C23, a quarter note D23, and a quarter note E23. The forty-fifth measure contains a half note F#23, a quarter note G23, and a quarter note A23. The forty-sixth measure contains a half note B23, a quarter note C24, and a quarter note D24. The forty-seventh measure contains a half note E24, a quarter note F#24, and a quarter note G24. The forty-eighth measure contains a half note A24, a quarter note B24, and a quarter note C25. The forty-ninth measure contains a half note D25, a quarter note E25, and a quarter note F#25. The fiftieth measure contains a half note G25, a quarter note A25, and a quarter note B25. The fifty-first measure contains a half note C26, a quarter note D26, and a quarter note E26. The fifty-second measure contains a half note F#26, a quarter note G26, and a quarter note A26. The fifty-third measure contains a half note B26, a quarter note C27, and a quarter note D27. The fifty-fourth measure contains a half note E27, a quarter note F#27, and a quarter note G27. The fifty-fifth measure contains a half note A27, a quarter note B27, and a quarter note C28. The fifty-sixth measure contains a half note D28, a quarter note E28, and a quarter note F#28. The fifty-seventh measure contains a half note G28, a quarter note A28, and a quarter note B28. The fifty-eighth measure contains a half note C29, a quarter note D29, and a quarter note E29. The fifty-ninth measure contains a half note F#29, a quarter note G29, and a quarter note A29. The sixtieth measure contains a half note B29, a quarter note C30, and a quarter note D30. The sixty-first measure contains a half note E30, a quarter note F#30, and a quarter note G30. The sixty-second measure contains a half note A30, a quarter note B30, and a quarter note C31. The sixty-third measure contains a half note D31, a quarter note E31, and a quarter note F#31. The sixty-fourth measure contains a half note G31, a quarter note A31, and a quarter note B31. The sixty-fifth measure contains a half note C32, a quarter note D32, and a quarter note E32. The sixty-sixth measure contains a half note F#32, a quarter note G32, and a quarter note A32. The sixty-seventh measure contains a half note B32, a quarter note C33, and a quarter note D33. The sixty-eighth measure contains a half note E33, a quarter note F#33, and a quarter note G33. The sixty-ninth measure contains a half note A33, a quarter note B33, and a quarter note C34. The seventieth measure contains a half note D34, a quarter note E34, and a quarter note F#34. The seventy-first measure contains a half note G34, a quarter note A34, and a quarter note B34. The seventy-second measure contains a half note C35, a quarter note D35, and a quarter note E35. The seventy-third measure contains a half note F#35, a quarter note G35, and a quarter note A35. The seventy-fourth measure contains a half note B35, a quarter note C36, and a quarter note D36. The seventy-fifth measure contains a half note E36, a quarter note F#36, and a quarter note G36. The seventy-sixth measure contains a half note A36, a quarter note B36, and a quarter note C37. The seventy-seventh measure contains a half note D37, a quarter note E37, and a quarter note F#37. The seventy-eighth measure contains a half note G37, a quarter note A37, and a quarter note B37. The seventy-ninth measure contains a half note C38, a quarter note D38, and a quarter note E38. The eightieth measure contains a half note F#38, a quarter note G38, and a quarter note A38. The eighty-first measure contains a half note B38, a quarter note C39, and a quarter note D39. The eighty-second measure contains a half note E39, a quarter note F#39, and a quarter note G39. The eighty-third measure contains a half note A39, a quarter note B39, and a quarter note C40. The eighty-fourth measure contains a half note D40, a quarter note E40, and a quarter note F#40. The eighty-fifth measure contains a half note G40, a quarter note A40, and a quarter note B40. The eighty-sixth measure contains a half note C41, a quarter note D41, and a quarter note E41. The eighty-seventh measure contains a half note F#41, a quarter note G41, and a quarter note A41. The eighty-eighth measure contains a half note B41, a quarter note C42, and a quarter note D42. The eighty-ninth measure contains a half note E42, a quarter note F#42, and a quarter note G42. The ninetieth measure contains a half note A42, a quarter note B42, and a quarter note C43. The hundredth measure contains a half note D43, a quarter note E43, and a quarter note F#43. The hundred-first measure contains a half note G43, a quarter note A43, and a quarter note B43. The hundred-second measure contains a half note C44, a quarter note D44, and a quarter note E44. The hundred-third measure contains a half note F#44, a quarter note G44, and a quarter note A44. The hundred-fourth measure contains a half note B44, a quarter note C45, and a quarter note D45. The hundred-fifth measure contains a half note E45, a quarter note F#45, and a quarter note G45. The hundred-sixth measure contains a half note A45, a quarter note B45, and a quarter note C46. The hundred-seventh measure contains a half note D46, a quarter note E46, and a quarter note F#46. The hundred-eighth measure contains a half note G46, a quarter note A46, and a quarter note B46. The hundred-ninth measure contains a half note C47, a quarter note D47, and a quarter note E47. The hundred-tieth measure contains a half note F#47, a quarter note G47, and a quarter note A47. The hundred-first measure contains a half note B47, a quarter note C48, and a quarter note D48. The hundred-second measure contains a half note E48, a quarter note F#48, and a quarter note G48. The hundred-third measure contains a half note A48, a quarter note B48, and a quarter note C49. The hundred-fourth measure contains a half note D49, a quarter note E49, and a quarter note F#49. The hundred-fifth measure contains a half note G49, a quarter note A49, and a quarter note B49. The hundred-sixth measure contains a half note C50, a quarter note D50, and a quarter note E50. The hundred-seventh measure contains a half note F#50, a quarter note G50, and a quarter note A50. The hundred-eighth measure contains a half note B50, a quarter note C51, and a quarter note D51. The hundred-ninth measure contains a half note E51, a quarter note F#51, and a quarter note G51. The hundred-tieth measure contains a half note A51, a quarter note B51, and a quarter note C52. The hundred-first measure contains a half note D52, a quarter note E52, and a quarter note F#52. The hundred-second measure contains a half note G52, a quarter note A52, and a quarter note B52. The hundred-third measure contains a half note C53, a quarter note D53, and a quarter note E53. The hundred-fourth measure contains a half note F#53, a quarter note G53, and a quarter note A53. The hundred-fifth measure contains a half note B53, a quarter note C54, and a quarter note D54. The hundred-sixth measure contains a half note E54, a quarter note F#54, and a quarter note G54. The hundred-seventh measure contains a half note A54, a quarter note B54, and a quarter note C55. The hundred-eighth measure contains a half note D55, a quarter note E55, and a quarter note F#55. The hundred-ninth measure contains a half note G55, a quarter note A55, and a quarter note B55. The hundred-tieth measure contains a half note C56, a quarter note D56, and a quarter note E56. The hundred-first measure contains a half note F#56, a quarter note G56, and a quarter note A56. The hundred-second measure contains a half note B56, a quarter note C57, and a quarter note D57. The hundred-third measure contains a half note E57, a quarter note F#57, and a quarter note G57. The hundred-fourth measure contains a half note A57, a quarter note B57, and a quarter note C58. The hundred-fifth measure contains a half note D58, a quarter note E58, and a quarter note F#58. The hundred-sixth measure contains a half note G58, a quarter note A58, and a quarter note B58. The hundred-seventh measure contains a half note C59, a quarter note D59, and a quarter note E59. The hundred-eighth measure contains a half note F#59, a quarter note G59, and a quarter note A59. The hundred-ninth measure contains a half note B59, a quarter note C60, and a quarter note D60. The hundred-tieth measure contains a half note E60, a quarter note F#60, and a quarter note G60. The hundred-first measure contains a half note A60, a quarter note B60, and a quarter note C61. The hundred-second measure contains a half note D61, a quarter note E61, and a quarter note F#61. The hundred-third measure contains a half note G61, a quarter note A61, and a quarter note B61. The hundred-fourth measure contains a half note C62, a quarter note D62, and a quarter note E62. The hundred-fifth measure contains a half note F#62, a quarter note G62, and a quarter note A62. The hundred-sixth measure contains a half note B62, a quarter note C63, and a quarter note D63. The hundred-seventh measure contains a half note E63, a quarter note F#63, and a quarter note G63. The hundred-eighth measure contains a half note A63, a quarter note B63, and a quarter note C64. The hundred-ninth measure contains a half note D64, a quarter note E64, and a quarter note F#64. The hundred-tieth measure contains a half note G64, a quarter note A64, and a quarter note B64. The hundred-first measure contains a half note C65, a quarter note D65, and a quarter note E65. The hundred-second measure contains a half note F#65, a quarter note G65, and a quarter note A65. The hundred-third measure contains a half note B65, a quarter note C66, and a quarter note D66. The hundred-fourth measure contains a half note E66, a quarter note F#66, and a quarter note

(Ride cym)

91

(Ride cym)

91

92